

# Ecological Land Management Services

Environments for Nature: Environments for People



Lane End  
Nature Reserve,  
Buckley

## About Us

With over 20 years' experience of ecological land management, and providing training courses, Wild Ground are ideally suited to providing you with your ecological land management services. In addition to this we work with schools and colleges to provide educational activities, run community events and offer an inclusive volunteer programme.

We own and manage a variety of sites to additionally benefit wider biodiversity and key species of conservation concern. The primary focus is the protection of amphibians and reptiles, specifically the protected great crested newt.

Our access policy maintains a mix of closed and public access sites to both protect sensitive habitats and facilitate engagement with the natural world.

The work undertaken on our various sites not only supports the current ecological needs of the sites but enhances it. We aim to ensure all work carried out benefits both the site and the local community.

Wild Ground work to engage, inspire and enthuse local communities to act together to protect wildlife, and enhance habitats and eco-systems. The work we carry out enables us to manage these important sites for the present day and for future generations.



## Foreword by Karen Balmer CPFA, Chief Executive



The State of Nature report 2019 found that biodiversity is declining in Wales, with 41% of wildlife species populations having decreased since 1970 and wildlife in general is now found in 30% fewer places. It is changes to agricultural and woodland management, increased urbanisation and pollution which are contributing to this decline.

Working in partnership with developers, planners, local partners, and stakeholders, Wild Ground can assist in safeguarding, enhancing, creating and managing valuable habitats on new urban and industrial developments, ensuring planning conditions are met allowing the developers to support Wales's aim of protecting the environment for future generations.

All of Wild Ground's work is aligned to the Well-being of Future Generations (Wales) Act 2015 and the Environment (Wales) Act 2016 to ensure we manage our natural resources in a sustainable way delivering positive outcomes for the environment, our communities and for future generations.



Picture taken under licence



## What We Do

**Wales has over 1000 SSSI (Sites of Special Scientific Interest) covering 12% of the nation.**

The unique and varied habitats of SSSI and the wildlife that they support need active management to ensure this natural heritage is protected for generations to come.

### Wild Ground maintain several SSSI.

Stryt Las a'r Hafod in Johnstown, Wrexham which comprises of Stryt Las, Aberderfyn and Brandie Brook nature reserves and the Buckley Claypits on the Lane End nature reserve.

**As well as SSSI Wild Ground also maintain sites that are:**

Scheduled Ancient Monument (SAM) areas,  
Special Areas of Conservation (SAC),  
Sites of Nature Conservation Importance (SNCI)  
and designated Local Nature Reserves (LNR).







## Lane End Case Study



Lane End nature reserve is a 34.1 hectare site in Buckley, Flintshire, North Wales. It was formerly Lane End Brickworks which was abandoned and unsafe, including an extremely large steep-sided lagoon.

The site and its surrounds were purchased by Redrow Homes NW to transform into a development of 300 houses. Redrow instructed The Environment Partnership (TEP) to design and implement a detailed restoration scheme for the site. This involved the infilling of the unsafe lagoon, the re-vegetation of the moonscape-like landscape and conversion to a multi-pond nature reserve.

Utilising Wild Ground's services Redrow and TEP were able to regenerate the former industrial space and establish biodiverse habitats alongside the housing development. The Lane End reserve has been planted with oaks, heather, silver birch, hazel, willow, rowan and bilberry with forty-five waterbodies created and configured on the site.

The Lane End Nature Reserve is integrated with neighbouring landscapes, including the Buckley Claypits, the adjoining Knowle Hill Nature Reserve, and the Buckley Heritage Trail. Together these are an SSSI, which itself forms a component of the Deeside and Buckley Newt Sites Special Area of Conservation (SAC).

Lane End Nature Reserve also includes the Knowle Hill Nature Reserve a Site of Nature Conservation Importance (SNCI). The reserve also contains Buckley Tramway a Scheduled Ancient Monument (SAM).

The project illustrates the benefits of ecologists and engineers working together to manage large-scale reclamation and creating a sustainable ecosystem.

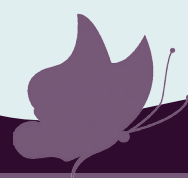
Prior to construction of the houses and waterbodies a total of 2,261 Great Crested Newts, 1,483 small newts, 55 common toads and 28 common frogs were found on site and translocated to suitable habitats in Knowle Hill until the new reserve was complete.

Management services include habitat enhancement and creation, enhancement and development of eco-systems and biodiversity, management, and enhancement of habitats for the benefit of amphibians, reptiles and wildlife, and annual site surveys for amphibians and reptiles.

## Partner Testimonial

*"Working with Wild Ground at Lane End has been hugely beneficial on all fronts. The landscaping, ponds, wildlife and ecological improvements Redrow funded through its Heathlands housing development are now being looked after by experts and available for the wider community, including our residents, to enjoy."*

**Jason Newton, Managing Director, Redrow Homes NW**





# Why Wild Ground?

Wild Ground have over 2 decades of experience in conservation management with a focus on the protection of amphibians and reptiles and SSSI.

By utilising Wild Ground's conservation management services, you are able to meet planning conditions and Welsh Government policy, while allowing us to continue our charitable conservation work across North Wales, inspiring and enthusing local communities to act together to protect wildlife and enhance habitats, eco-systems and biodiversity.

Wild Ground run and manage 15 nature reserves with a special interest in conserving amphibian and reptile habitats. Our work involves ecological land management, providing training courses, running community events, working with schools and colleges to provide activities, and running an inclusive volunteer programme.



## Wild Ground Services

Wild Ground is well positioned to help developers and engineers. Wild Ground can offer conservation management services to allow you to protect wildlife and enhance habitats and eco-systems in and around your development.

- Advice, guidance, and practical assistance on avoiding, reducing, and mitigating impacts.
- Management of nature reserves including long term management on behalf of developers.
- Habitat restoration, enhancement, and creation.
- Enhancement and development of eco-systems and biodiversity.
- Management and enhancement of habitats for the benefit of amphibians, reptiles, and wildlife.
- One off and annual site surveys for amphibians and reptiles.
- Provision of ecological training and learning opportunities for personal and professional skills development.



Wild Ground, 3-4 Plas Power, Tanyfron, Wrexham, LL11 5SZ

Wild Ground is a company limited by guarantee and registered in England and Wales. Charity Registration Number 1080838 / Company Registration number 3889382

[www.wild-ground.org.uk](http://www.wild-ground.org.uk)

[info@wild-ground.org.uk](mailto:info@wild-ground.org.uk)

01978 269 568



BUDDSODDWYR | INVESTORS  
MEWN POBL | IN PEOPLE

[www.wild-ground.org.uk](http://www.wild-ground.org.uk)

